

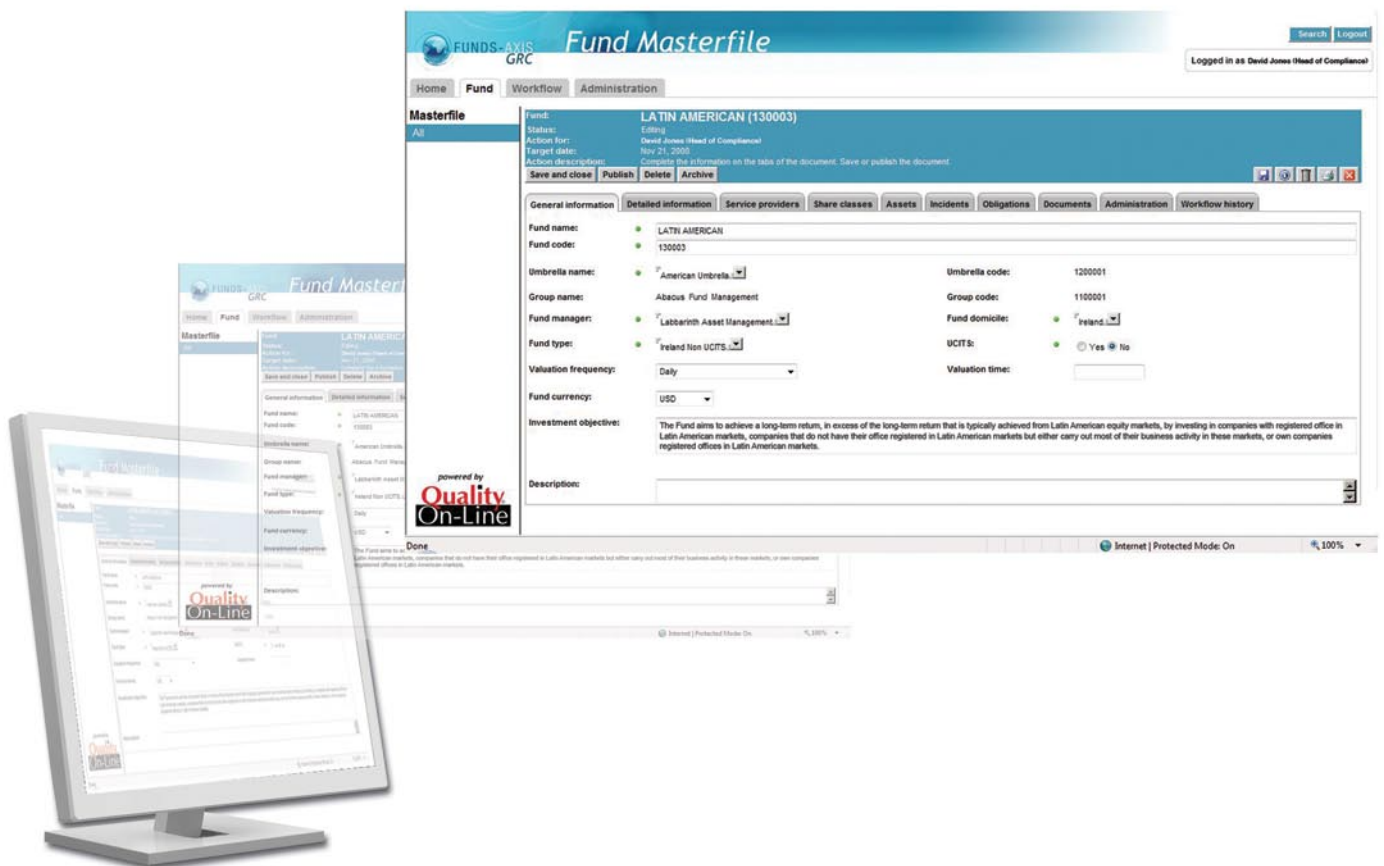
**Funds-Axis GRC™** features the Fund Masterfile module.

The Fund Masterfile is a centralised repository for all fund information. It replaces a multitude of spreadsheets currently maintained within your organisation and can be integrated with your other business systems.

Information in respect of investment objectives, risk and investment limits, service providers, dealing information, valuation details and charges, target customer profiles and distributor information can all be easily captured.

All fund documents can be captured including trust deeds, prospectus, key features documents, report and accounts, risk management processes and valuation policies. Agreements with service providers, SLAs and approved signatory lists can be easily captured and maintained.

The Fund Masterfile fully supports EFAMA's "Fund Processing Passport" (FPP) initiative to standardise fund order processing. The information captured in the Fund Masterfile (or a user-defined sub-set thereof) can easily be shared on-line; including provision of search functionality and interactive updating.



The Fund Masterfile is fully integrated with the other modules within the **Funds-Axis GRC™** application. Incidents and obligations can be viewed and reported on against funds. Assessments can be scheduled and performed against individual funds and funds can be risk-assessed and reviews scheduled and resources allocated accordingly. This combination can, for example, create a powerful enterprise-wide Treating Customers Fairly (TCF) application.